



Masters Circle

Recognizing Experience & Exceptional Results
Portland Metropolitan Association of Realtors®

2024 LEADERSHIP TEAM



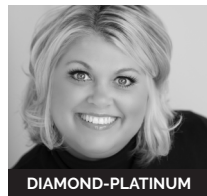
Joanne Sterling
PRESIDENT
Re/Max Equity Group
503-919-0346



Chylese Austin
VICE PRESIDENT
Lark and Fir Realty, LLC



Robert Delavan
IMMEDIATE PAST PRESIDENT
Delavan Realty Inc
503-956-4275
RPAC Major Investor*



Sarah Malarkey
DIRECTOR AT LARGE
CRS
Opt
503-890-0860
RPAC Major Investor*



Josephine Tang
DIRECTOR AT LARGE
ABR
Cascade Hasson Sotheby's
International Realty
971-300-7015



Judie Dunken
DIRECTOR AT LARGE
GRI
Judie Dunken Real Estate LLC
503-849-1593



Phelan Van Deren
DIRECTOR AT LARGE
Delavan Realty Inc
503-936-8815

THE MASTERS CIRCLE is an organization established under the Portland Metropolitan Association of Realtors® that recognizes dedication, experience and achievement. Members work together to advance professionalism and ethics within the industry and enhance the Realtor® image by giving back to the communities they serve.

For more information about buying or selling a home, contact a member of the Masters Circle.

www.pmarc.com



This ad does not represent the entire membership of the PMAR Masters Circle.

▲ Represent individuals who have been members of the Masters Circle for five or more years consecutively.

Life Members have maintained Realtor® membership for 25 years, and have been a member of the Masters Circle for 15 years.

*This member has invested \$1,000 or more in the Realtors® Political Action Committee.



M Diamond-Platinum Members

Diamond-Platinum members have attained at least \$5 million in closed dollar volume during the preceding calendar year and \$20 million or more in closed dollar volume during the immediate past four years.



Jeanne Able
Windermere Realty Trust
(503) 703-2430



Judy P. Adler
GRI
Windermere Realty Group
(503) 675-8264



Sohee Anderson
GRI
(w)here, inc.
(503) 708-3458



Jim Arnal
Windermere Realty Trust
(503) 351-3000



Karoline Ashley
Principal Broker
Windermere Realty Trust
(503) 819-4851



LIFE MEMBER
Mary Jo Avery
Avery Bunick Luxury Properties
(503) 799-3839



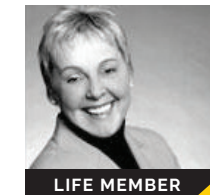
Bill Bailey
Re/Max Advantage Group
(503) 348-6380



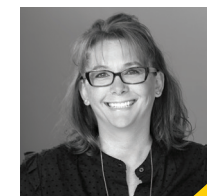
Shannon Baird
Neighborhood Works
(503) 799-5095



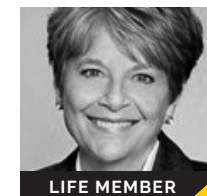
Ilyse Ball
Oregon First
(503) 495-4878



LIFE MEMBER
Chris Balmes
GRI
Chris Balmes Properties LLC
(503) 319-7026



Lisa Balmes PC, e-PRO
Chris Balmes Properties LLC
(503) 901-6545



LIFE MEMBER
Pat Bangerter
Eleete Real Estate
(503) 803-6269



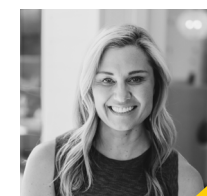
Gina Bany
Principal Broker
Better Homes and Gardens RE
(503) 267-5457



Michael Beirwagen
Berkshire Hathaway HomeSvcs
(503) 810-0505



Lesli Ann Bekins
GRI, CRS
Re/Max Equity Group
(503) 260-1342



Beth Benner
Living Room Realty
(503) 819-2885



Kendall Bergstrom
Cascade Hasson Sotheby's
International Realty
(503) 799-2596



Andrew Berlinberg
Keller Williams Realty Professionals
(503) 780-5625



Yvonne S. Blewett
ABR
Cascade Hasson Sotheby's
International Realty
(503) 577-6262



Sharon Bloudek
GRI
Living Room Realty
(503) 701-1000



Darryl Bodle II
Keller Williams Realty
PDX Premiere
(503) 709-4632



Chris Bonner
LIFE MEMBER
GRI
Cascade Hasson Sotheby's
International Realty
(503) 516-6912



Laurie Bornstein
SRES
Real Broker
(503) 451-9626



Maria Boulton
Coldwell Banker Bain
(646) 939-7522



Lisa Bowes
SRES
Windermere Realty Group
(503) 830-8929



Kat Granum
Hustle & Heart Homes
(503) 756-4031



Billy Grippo
LIFE MEMBER
Windermere Realty Trust
(503) 997-3239



Stuart Gunderston
Harcourts RE Network Group
(503) 319-4455



Rick Brainard
Premiere Property Group, LLC
(503) 781-1303



Ashley Bronson
Cascade Hasson Sotheby's
International Realty
(971) 930-5427



Vanessa Calvert
Cascade Hasson Sotheby's
International Realty
(503) 869-8421



Sara Clark
Eleete Real Estate
(503)-784-4878



Susan Colton
GRI
RE/MAX EQUITY GROUP
(503) 936-0161



Dianne Hagan
GRI
Premiere Property Group, LLC
(503) 358-1112



Alexis V. Halm
SRES
Windermere Realty Trust
(503) 819-3439



Julie Halter
Cascade Hasson Sotheby's
International Realty
(503) 806-0492



Rick Compton
Premiere Property Group, LLC
(503) 704-7633



Marie Conser
John L. Scott, Inc.
(503) 459-2726



Ernest Cooper
ABR,CRS
Cooper Realty
(503) 515-8426



Jessica Corcoran
Eleete Real Estate
(503) 953-3947



Peter Dillenburger
LIFE MEMBER
Cascade Hasson SIR
(503) 310-8194



Lori Hamilton
GRI
Coldwell Banker Bain
(503) 423-7453



Joel Hamley
ABR,CRS
John L. Scott, Inc.
(971) 506-9499



Lisa Hanna, MBA
GRI
Eleete Real Estate
(503) 320-7920



Sarita Dua
GRI
Keller Williams Sunset
(503) 522-0090



Andrea Dufresne
Cascade Hasson Sotheby's
International Realty
(503) 793-7625



Beth Earnest
GRI
Earnest Real Estate
(503) 330-7400



Allison Ellermeier
Neighbors Realty LLC
(971) 322-5502



Donna Ellison
Keller Williams Realty
PDX Premiere
(503) 380-5706



Justin Harnish
Harnish Company Realtors
(503) 913-2858



Jenna Hasson
Cascade Hasson Sotheby's
International Realty
(503) 680-1920



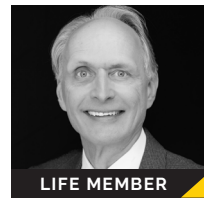
Lauren Hasson
Cascade Hasson Sotheby's
International Realty
(503) 348-0536



Deserie Fernbaugh Daniels
CRS
Coldwell Banker Bain
(503) 348-7737



Sharon Fleming
Coldwell Banker Bain
(503) 680-3702



Greg Fox
LIFE MEMBER
CRS
Happy Homes Properties, Inc.
(503) 936-8682



Bill Futrell
Windermere Realty Trust
(503) 750-8662



Patti Gage
CRS
Berkshire Hathaway HomeSvcs
(503) 310-8425



Linda Heinrichs
Keller Williams Realty
PDX Premiere
(503) 502-5227



Elizabeth Henderson
GRI,ABR,CRS
Wings NW Real Estate LLC
(503) 320-9160



Patrick J Henry, P.C.
GRI,ABR
Coldwell Banker Bain
(503) 789-6002



Andrew Galler
CRS
Realty Works Group
(503) 975-1829



Tascha Gamroth
Realty One Group Prestige
(503) 351-7337



Melissa "Mel" George
Windermere Realty Trust
(503) 706-1611
RPAC Major Investor*



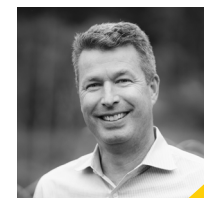
William Gilliland
Windermere Realty Trust
(503) 333-6475



Tammy Going
Windermere Realty Trust
(503) 442-2169



Iraida B. Hermann
ABR
Berkshire Hathaway HomeSvcs
(503) 479-8067



Dirk Hmura
The Agency Portland
(503) 740-0070



Russell Homewood
LIFE MEMBER
GRI
Premiere Property Group, LLC
(503) 705-4584

WHAT SETS MEMBERS OF THE MASTERS CIRCLE APART?

THEY HAVE THE EXPERIENCE TO PROVIDE EXCEPTIONAL RESULTS

When selling your home, a seasoned broker can save you time and money. Understanding how to interpret current market conditions and position your home for a faster, smoother transaction requires knowledge and skills only gained through experience.

In the past year, members of the Masters Circle have completed anywhere from \$2 million to over \$230 million in a variety of home sales. This wide range of experience provides them with valuable expertise that benefits their clients.

THEY GIVE BACK TO THEIR COMMUNITY

Not only is the Masters Circle committed to serving their clients, they are committed to serving their community at large! Our members seek to build and strengthen the relationships between the real estate industry and their communities. The Masters Circle donates proceeds from their annual silent auction to local non-profits working to improve our community such as the African American Alliance for Homeownership, Northwest Children's Outreach, Union Gospel Mission, JOIN, and more.

THEY FORM A NETWORK OF KNOWLEDGE

A knowledgeable Realtor® can help you find a home best meeting your needs and expectations. You get access to their resources and knowledge of the market area and available inventory as well as their ability to recommend other qualified housing professionals. This includes mortgage lenders, home inspectors, and others whose services will be integral to a great home buying experience.

When a Realtor® joins the Masters Circle, they join a network of accomplished professionals who help each other improve their skills. This network of knowledge and experience helps them serve you – the client!





Carey Hughes
Keller Williams Realty
Professionals
(503) 516-7919



Susie Hunt Moran
Windermere Realty Trust
(503) 970-9866



Tonya Hurt
Harcourts RE Network Group
(503) 413-0565



Bobbi Inman
Soldera Properties Inc
(503) 970-2740



Kellie Jenkins
SRES
Windermere Realty Trust
(503) 784-3535



David Policar
CRS
(w)here, inc.
(503) 504-5200



Temara Presley
CRS
John L. Scott, Inc.
(503) 705-2546



Kathy Quick
Quick & Assoc Real Estate
(503) 730-0702



Sarah Johnson
O'Donnell Group Realty
(541) 207-7996



Brian Charles Johnson
SRES
Windermere Realty Trust
(503) 957-5587



Steve Kaer
Kaer Property Group
(503) 349-1312



Nancy Kelly
Harcourts RE Network Group
(503) 805-5887



Marcia Kies
GRI,CRS
Cascade Hasson Sotheby's
International Realty
(503) 789-1525
RPAC Major Investor*



Tran Ly Rogers
CRS,ABR
Re/Max Equity Group
(503) 809-9686



Erin Rothrock
Windermere Realty Trust
(503) 784-3810



Tim Saeland
ABR,CRS,SRES
Re/Max Equity Group
(503) 332-1013



Kristen Kohnstamm
Cascade Hasson Sotheby's
International Realty
(503) 709-4518



Marcus Koss
CRS,SRES
Peak Realty
(503) 539-5814



Michelle Koury
Windermere Realty Trust
(503) 970-5092



Mila Leissler
Windermere Realty Trust
(503) 781-1114



Bryn Lindeugel
Suntree, Inc.
(503) 708-8824



Eva Sanders
CRS
John L. Scott, Inc.
(503) 705-0755
RPAC Major Investor*



Amy Savage
A Group Real Estate
(503) 692-5000



Melissa Shaw
ABR
Lewis Realtors
(503) 381-7672



Jennifer Maben
Harcourts RE Network Group
(503) 349-4365



Graham Marden
GRI
Premiere Property Group, LLC
(503) 807-4504



Amelie Marian
Windermere Realty Trust
(360) 907-9513



Jordan Matin
Matin Real Estate
(971) 285-2180



Kevin May
Coldwell Banker Bain
(415) 846-0577



Linda Skeele
Windermere Realty Trust
(503) 504-5811



Raejean Sly
GRI,ABR
Coldwell Banker Bain
(503) 913-1587



Michelle Spanu
Cascade Hasson Sotheby's
International Realty
(503) 330-5573



Dave McGrew
John L. Scott, Inc.
(503) 819-9562



Mike McHugh
GRI
John L. Scott, Inc.
(503) 936-3888



Dana McKillop
GRI
Windermere Realty Trust
(503) 348-1808



Tedi McKnight-Heikes
ABR
Engel & Voelkers
(503) 819-2430



Chris Monty
GRI,CRS
Re/Max Equity Group
(503) 939-9783



Karina Stark
Keller Williams Realty
Professionals
(503) 997-9087



Molly Starr
GRI
Re/Max Equity Group
(503) 789-2417



Dana Terhune
CRS, GREEN
Re/Max Equity Group
(503) 803-0767
RPAC Major Investor*



Matt Moran
Windermere Realty Trust
(503) 781-9646



John Nieland
Cascade Hasson Sotheby's
International Realty
(503) 636-7770



Lynda O'Neill
John L. Scott, Inc.
(503) 789-0047



Lisa Owens
CORCORAN PRIME
(503) 312-2330



Alex Phan
CRS
Keller Williams Realty Professionals
(503) 860-8128
RPAC Major Investor*



Val Thorpe
GRI
Cascade Hasson Sotheby's
International Realty
(503) 349-0908



Jessica J Tindell
GRI
Tindell & Co
(971) 533-4328



Heidi Torrko
Pink Dot Properties LLC
(503) 351-9716

THEY ARE DEDICATED TO THEIR CRAFT

Joining the Masters Circle is an extra step Realtors® can take to demonstrate their dedication and commitment to the field. These members have risen to the top of the industry by excelling in negotiation, listening, attention to detail, and knowing all the ins and outs of real estate.

Members of the Masters Circle annually demonstrate outstanding achievements in the listing and selling of property. Choosing to work with a Masters Circle Realtor® gives you the confidence of working with a dedicated professional for the largest investment of your life.

THEY ARE REALTORS®

Masters Circle members aren't just real estate professionals – they are Realtors® and abide to a strict Code of Ethics based on professionalism and protecting their clients. They are proficient negotiators who know their local market better than anyone and have exclusive access to educational opportunities to further their skills.

Are you a first time homebuyer who is looking to purchase? A senior who wants to downsize? Or are you relocating to the Portland Metro Area? There is a Masters Circle Realtor® member that can make your homebuying dreams come true!

For more information about buying or selling a home, contact a member of PMAR's Masters Circle. A membership directory can be found at PMARMC.COM.





Connie Vera
M.A., CNE, MCNE
EXP Realty LLC
(503) 890-0654



Aimee Virnig
GRI
Windermere Realty Trust
(503) 803-7678



Grace Wadell
Cascade Hasson Sotheby's
International Realty
(971) 294-2434



Pam Waldman
Keller Williams Realty
PDX Premiere
(503) 679-1788



Timothy Walters
Re/Max Equity Group
(503) 545-1880



Jennifer Weinhart
The Agency Portland
(503) 704-0172



Carrie Welch
SRES
Oregon First
(503) 522-7695



Claire Widmark-Wright
GRI
Premiere Property Group, LLC
(971) 275-3691



Tracy Wiens
John L. Scott, Inc.
(503) 516-8162



Julie Williams
Eleete Real Estate
(503) 292-1500



Victoria Wriglesworth
Harcourts RE Network Group
(503) 780-6607

M Broker of the Year and Managing Broker of the Year

The **Broker of the Year** award recognizes a Realtor® who is known for their experience, exceptional results, and involvement in the real estate industry, as well as their involvement in their community.

PAST RECIPIENTS SINCE 2020

2023 Broker of the Year

Donald Falk, Cascade Hasson Sotheby's International Realty

2022 Broker of the Year

Lauren Hasson, Cascade Hasson Sotheby's International Realty

2021 Broker of the Year

Patrick Henry, Coldwell Banker Bain

2020 Broker of the Year

Lori Hamilton, Coldwell Banker Bain

The **Managing Broker of the Year** award recognizes a Managing Broker Realtor® who is known for their experience, leadership, and involvement in the real estate industry, as well as their involvement in their community.

PAST RECIPIENTS SINCE 2020

2023 Managing Broker of the Year

Amy Logue, Keller Williams Realty Professionals Portland Central

2022 Managing Broker of the Year

Colleen Gordon, Keller Williams Realty Professionals

2021 Managing Broker of the Year

Ginger Burke, Cascade Hasson Sotheby's International Realty

2020 Managing Broker of the Year

Jessica Tindell, Tindell & Co.

M Platinum Members

Platinum members have attained \$20 million or more in closed dollar volume in the immediate past four years.



Rachel Balmforth
ABR
Cooper Realty
(503) 939-0573



Pam Blair
CRS
Yogabug Real Estate
(503) 347-8551



Rick Christensen
GRI
Windermere Realty Trust
(503) 680-1111



Linda Cohn
Coldwell Banker Bain
(503) 888-2646



Elizabeth Cox
GRI, ABR
Re/Max Equity Group
(503) 341-9375



Kara Dale-Sonnars
Earnest Real Estate
(503) 330-7401



Susan Gibson Stier
GRI, CRS
Windermere Realty Trust
(503) 701-0066



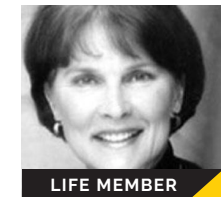
Sue Hildreth
SRES
Re/Max Equity Group
(503) 936-9652



Erin Keys
Windermere Realty Trust
(503) 927-4774



Jennifer King
GRI
Windermere Realty Group
(503) 799-9027



LIFE MEMBER
Sharon Loffelmacher
Cascade Hasson Sotheby's
International Realty
(503) 781-2696



Chad Meier
Living Room Realty
(503) 709-9600



Nathan Neubauer, PC
(w)here, inc.
(503) 929-3782



Lisa Nishioka
ABR
Xanadu Real Estate LLC
(503) 380-6797
RPAC Major Investor*



Lauren Perreault
GRI, CRS
RE/MAX Select
(503) 388-2888



Sarah Renard
Windermere Realty Trust
(206) 355-9741



Shauna Stroup Harrison
SRES, GREEN
Oregon First
(971) 219-0975

M Diamond Members

Diamond members have attained \$5 million or more in closed dollar volume in the preceding calendar year.



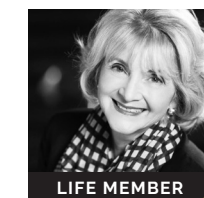
Sara Jones
ABR
Cascade Hasson Sotheby's
International Realty/
(503) 515-7848



Laura Martin
Cascade Hasson Sotheby's
International Realty
(503) 939-7810

M Members

Members have attained closed dollar volume of at least \$2 million or 20 transaction sides during the preceding calendar year.



LIFE MEMBER
Joanie Elliott-Barclay
GRI, ABR, CRS
Coldwell Banker Bain
(503) 869-2979